

Erin

THE SUPERIOR SIT-STAND DESK



EUROPEAN
OFFICE
FURNITURE
MANUFACTURER



Erin

The superior sit-stand desk

Our **ERIN sit-stand desks** make it easy for users to switch positions throughout the day, reducing **health risks** associated with prolonged sitting. The range includes individual desks and shared structure desks for collective workspaces.

The advanced electric drive system allows for a wide adjustment range, so the desk height can be set to suit any user. Each desk has a handy control unit with **a memory function** for storing height settings, an alarm to remind the user to change position, and a USB port for charging a smartphone.





Change positions and move around

The human body is designed to move. Alternating between sitting and standing positions is shown to help minimise the risks associated with a sedentary lifestyle. The range includes individual desks and shared structure desks for collective workspaces.

The advanced electric drive system allows for a wide adjustment range, so the desk height can be set to suit any user.

Erin individual desks
Solange desktop screens
Office chairs not available



Customisable individual or shared structure sit-stand desks

In individual or shared structure versions, Erin desks offer a wide range of options: horizontal and vertical cable management, fixed or mobile legs, partition screens, etc.



Twin drive system

- › A high-performance control unit

Safe

- › Built-in anti-collision system

Stylish

- › Curved foot design with adjustable stabilisers

Customisable

- › Multiple solutions for horizontal and vertical cable management
- › Others options: castors, desktop screens



Electric drive:

- › Height-adjustable from 65 to 130 cm (3 rectangular-section telescopic metal columns)
- › Control unit with digital display panel
- › 4-position memory function
- › Built-in USB charger (A & C)
- › Alarm for scheduling reminders
- › Other adjustment options: Set minimum and maximum height, desktop lock, anti-collision sensitivity setting...

Vertical cable management

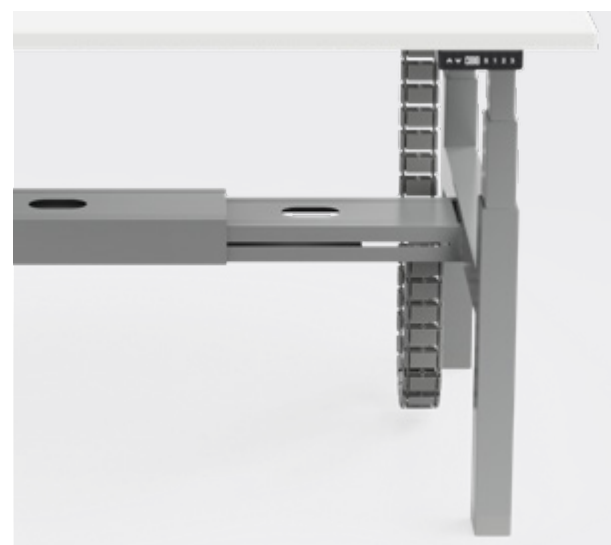


^
Magnetic cable housing



^
Extendable vertical cable channel

Cable management for shared structure desks



◀
Twin-compartment telescopic cable trough
Holds socket outlets and cables; a cable channel can be added to facilitate cable routing

Desktop screens



◀
Special fabric-covered desktop screens
Acoustic screen and Non-acoustic screen
H.700mm For shared structure desks
For individual desks, see SOLANGE and TWINS desktop screens

Static or mobile leg base



◀
Castor-mounted
With brakes, ø 40mm
(suitable for all floor types)
Only for individual desks



Individual desk

Whether arranged individually or in pairs, Erin encourages users to adjust their working position, reducing the health risks associated with prolonged sitting.



Shared-structure desks

A two-person desk for open-plan environments. This setup facilitates communication while allowing each user to personalise their workspace and adjust their desk to the correct height.



Erin

TECHNICAL DATA SHEET

Erin



Worktop

Melamine-covered particle board
panels Thk 25 mm

Twin drive system

(one in each leg upright)

- Height-adjustable from 65 to 130 cm
- Control unit with digital display panel
- 4-position memory function
- Built-in USB charger (A & C)
- Alarm for scheduling reminders to change position
- Other adjustments



Base/legs

- Rectangular-section
uprights, 60 x 90 mm
- 3 telescopic shafts

Built-in anti-collision system



Rounded base

With stabiliser feet
Option: Castors with brakes, ø 40 mm
(suitable for all floor types)



EUROPEAN
OFFICE
FURNITURE
MANUFACTURER



Worktops



Standard melamine

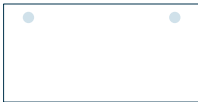
- › Melamine-covered particle board panels, thk 25 mm, with an anti-reflective coating on both sides
- › Panel density Thk 25 mm: 600 to 670 kg/m³
- › Flat edge banding (2 mm thick) made from a strip of glued ABS, with rounded edges
- › Edge banding in same finish as worktop (except for Maritime pine N8, which comes with plywood edge banding)
- › 9 finishes available (see Shade Card)
- › **Black R9:** Resistant to fingerprints thanks to a special surface treatment that leaves an additional film on the paper



- › Panels sourced from sustainably managed forests - **PEFC**
- › Panels have a **fire-resistance rating of M3** (combustible, moderately flammable) as per standard **NF EN 13501-1**
- › Panels have a **formaldehyde emissions rating of E05**, with a maximum of 0.062 mg/m³ or a limit of 0.05 ppm and comply with standard **NF EN 717**
- › Melamine panels have an **antibacterial surface** that meets **standard ISO 22196**
- › 68% on average from recycled materials (pre- and post-consumer) - 100% recyclable

Power & cable management

25 mm thick worktops:



- › **2 pre-drilled openings ø 80 mm:**
- for cable ports (sold separately)



- › **Scalloped edge and pre-drilled openings ø 80 mm:**
- in the middle of the desk, D. 80 mm
- for cable ports (sold separately)



- › **Opening for a soft-closing top-access module:**
- Pre-drilled opening for a one-way top-access module W. 240 x D. 120 mm (top-access module must be ordered separately)
- Single-compartment metal cable trough included, in same finish as desk legs

Structure/Base



Structure

Individual desks

- › Structure with 2 centrally positioned legs:
 - Rectangular-section metal uprights, 60 x 90 mm / 50 x 80 mm / 40 x 70 mm, thk 2 mm, with 3 telescopic shafts
 - Base W. 700 x 80 mm with curved ends and stabiliser feet (adjustment range 20 mm)
- › Optional castors available to replace the stabiliser feet (see options)
- › 1 structural telescopic metal frame, adjustable from 1075 to 1800 mm
- › 2 upper crossbeams made from tubular steel, W. 600 x H. 40 mm (thk 3 mm)
- › Epoxy powder finish in a choice of 4 colours: White (RAL 9010), Silver grey (RAL 9006), Graphite grey (RAL 7016) or Black (RAL 9005)



Shared-structure desks

- › Legs connected by a metal bar crossbeam W. 775 x H. 80 x D. 60 mm
- › ABS counter top units under the legs colour-matched with the columns
- › Levelling stabilisers
- › Options:
 - Double telescopic cable trough to be fixed between the 2 beams. Allow passage of plugs and cables
 - Fabric desktop screens can be fastened to the structure

Fastening of the worktop to the structure

- › Secured using metal inserts and screws, facilitating assembly and dismantling
- › Excellent level of tensile strength (140 kg per insert, under testing conditions)

Electric adjustment system



› Electric height-adjustment system

- From 650 to 1300 mm (including worktop, thk 25 mm)
- H. + 30 mm for versions with castors (Possibility of adjusting the new height using the control unit - See user manual)

› Twin drive system (one in each leg upright)

- Lift speed: 40 mm/sec
- Thrust force per upright: 800 N
- Max. load per worktop: 120 kg
- Noise level: 45 dB

› Power supply unit:

- 100-240 V, 50/60 Hz, 3A with a power supply cable (L. 3,5 m)
- Supplied with either an EU or a UK plug
- Max. power consumption during operation 58 W - Standby power consumption: 0.7 W

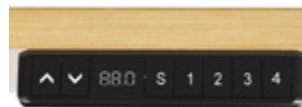
› Control unit:

- Digital display panel with a 4-position memory function and a USB charger (A & C)
- Many possible adjustments (See below and refer to the user manual for full details)
- The control unit is secured below the worktop, at the left or right edge
- Leave enough space to access the USB port if there is a piece of furniture or a wall next to the worktop

› Built-in anti-collision system:

- In the event of a collision, the desk stops moving and lifts or lowers by 2 cm
- Code «E05» will be displayed on the control unit

How to use the control unit (see user manual)



› Operation:

- Plug the cable into a power outlet.
- The desk/table is ready for use.
- Press «^» or «v» to raise or lower the desk.

› Reset:

- Hold down the «v» button until the desk is in the lowest position.
- Release the button, then press and hold the «v» button for 5 seconds until you hear a beep.

› Using the memory function:

- Raise or lower the worktop to the desired height.
- Press «S» and then «1» to save the height as Position 1.
- Repeat the steps to save other height positions (a maximum of 4 heights can be saved).
- The height positions will remain in the memory even if the power cable is unplugged.

› Reminder to stand up:

- To activate the timer, press «1» and «3» simultaneously, 0;0h» will be displayed. Then press «^» or «v» to adjust the timing. The timer can be set in half-hour increments (0.5)

› Other possible adjustments (refer to the user manual for full details):

- Set a minimum or a maximum height.
- Lock/unlock the desk.
- Other settings (sensitivity of the anti-collision system, etc.)

ⓘ All the components must be installed to ensure correct operation.
If the system is not working correctly, please contact us

Options



For individual desks

Castors

- › Set of 4 castors (for individual desks):
 - Black ABS castors with brakes, ø 40 mm with grey roller bands
 - Suitable for all floor types
 - Mounted on the base instead of the stabiliser feet
- › Castors increase the worksurface height by 30 mm: Minimum height with castors H. 680 mm
- › Compatible with individual desks of D. 700, 800 and 900 mm

For shared-structure desks

Double telescopic cable trough

- › Allows passage of plugs and cables
- › Quickly fixed to the structure in between the 2 beams
- › Adjustable in width from 930 to 1680 mm, suitable for worktop sizes W. 1200 to 1800 mm
- › With holes on the top and the bottom for easy cable routing and concealment
- › Global Sizes: W. 930/1680 x H. 80 x D. 202 mm
- › Epoxy powder finish. Choice of 4 colours: White (RAL 9010), Silver grey (RAL 9006), Graphite grey (RAL 7016) and Black (RAL 9005)
- › Possibility of changing the sliding cover with a higher capacity cover (other options)

High capacity cover for double telescopic cable trough

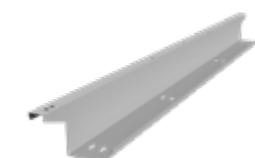
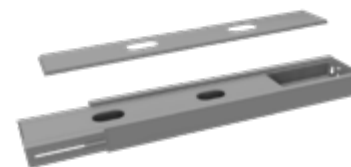
- › Allows more cables and plugs to be stored.
- › Can be positioned on the cable trough at the place of the sliding cover already provided
- › Total height of the cable trough with high capacity cover: H. 117 mm (height of cover alone: 48 mm)
- › Perforations for passing cables
- › Of metal, epoxy powder finish. Choice of 3 colours: white (RAL 9010), silver grey (RAL 9006) and black (RAL 9005)

Vertical trunking cables (not compatible with individual desks):

- › Composed of injected ABS. 20 small squares W. 68 x H. 29 x D. 36 mm connected. Total height: 1320 mm
- › Top and bottom metal plate for fastening. Is fastened by screws on the right and left between the bench cable trough (perforations under the cable trough) and worktop (woodscrews)
- › Extendible up to 1300 mm
- › Sold as a unit
- › Finishes: white SO, aluminium grey OI or black OF

Additional option:

Individual cable troughs to screw on under the worktops
(See in the catalog)



Fabric desktop screens

For individual desks

See **SOLANGE** and **TWINS** in the catalog

For shared-structure desks

- › Screens H. 700 mm
- › Fastened to the structure using fixing clamps, sold separately

Acoustic fabric desktop screens

- › Outer frame made from aluminium 47 mm thick, joined by 4 rounded ABS corner pieces
- › Core made from honeycomb cardboard (made entirely from recycled fibres), 25 mm thick, clad with 1 layer of 10 mm thick acoustic polyester fibre on each panel face
- › The polyester fibre offers the following environmental benefits:
 - OEKO-TEX certified: certification guaranteeing the absence of substances posing a health risk
 - Manufactured using a minimum of 85% recycled fibres
 - 100% recyclable
- › Fire rating B-s1.d0 (Euroclasses according to EN 13501-1, equivalent to French fire rating M1)
- › Fabric covering (see Fabrics shade card)
- › The acoustic desktop screen absorbs +/- 50% of sound disturbance.
- › Acoustic benefit available. (Consult us)

Fixing clamps (sold separately - must be ordered):

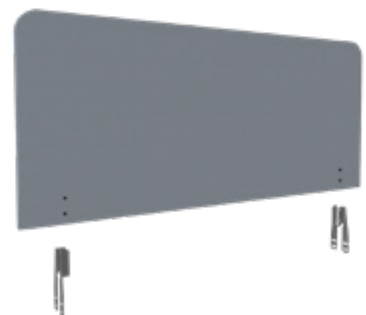
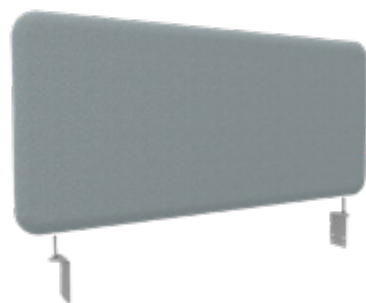
- › Metal clamp topped with a metal rod and ring to fix the panel on the desktop.
- › Fastening by screw in the structure
- › Sold in batches of 2

Non acoustic fabric desktop screens

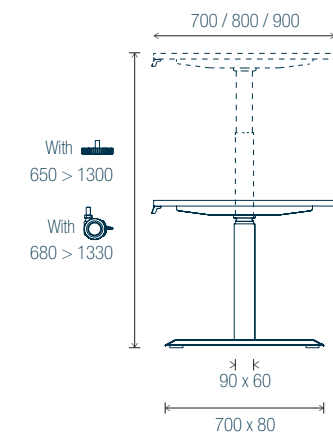
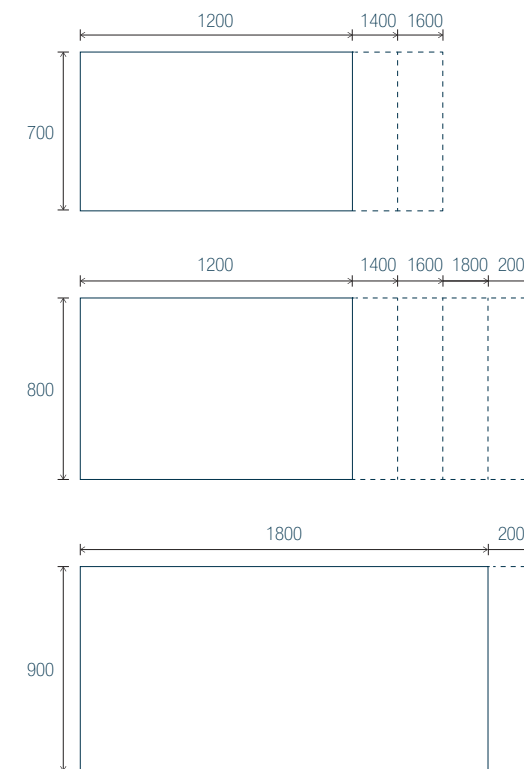
- › Melamine-covered particle boards, thickness 25 mm, fabric-covered
- › 2 rounded corners and 2 straight corners to the base

Fixing clamps (sold separately - must be ordered):

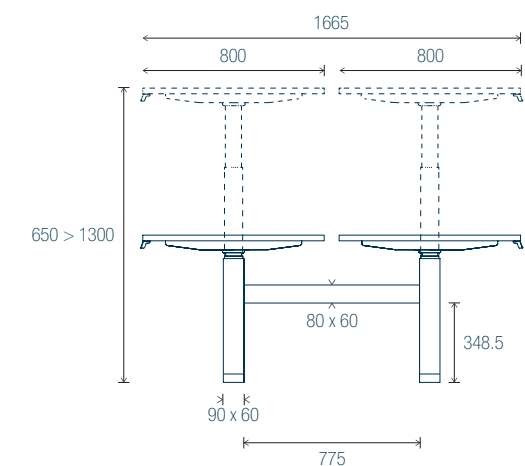
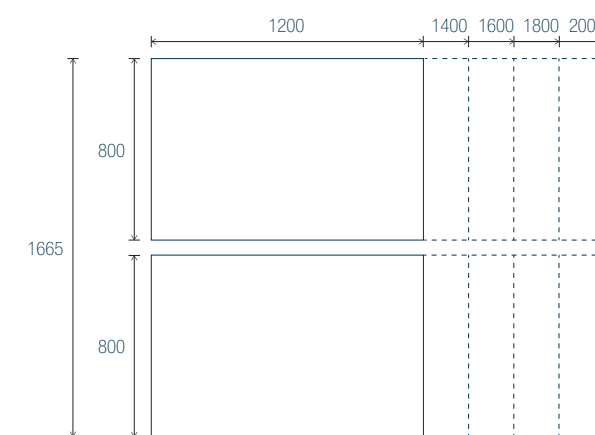
- › Metal clamps
- › Fastening by screw in the structure and in the screen
- › Sold in batches of 4



Individual desks



Shared-structure desks





Overview
Drawings and dimensions

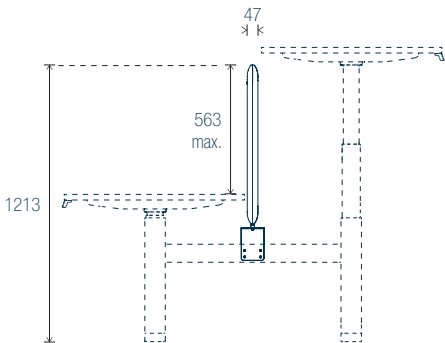
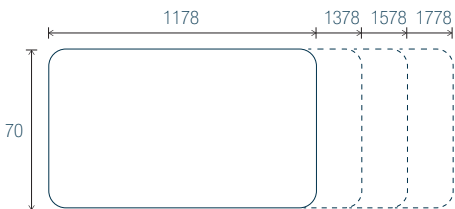


Shade card

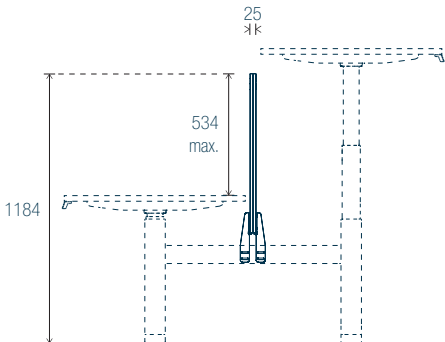
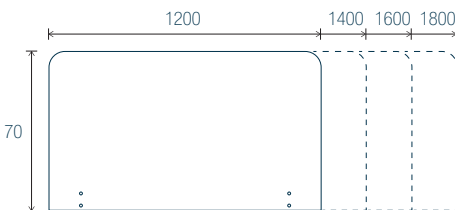
Erin

Desktop screens

Acoustic



Non acoustic



Melamine -Worktops

Wood finishes



N8*
Maritime pine



RZ
Lakeland acacia



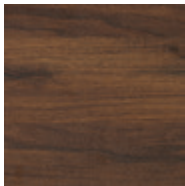
R1
Light oak



R5
Light beech



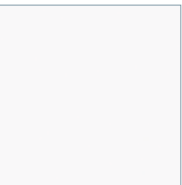
R3
Brunswick oak



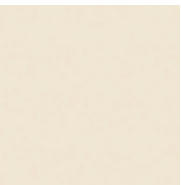
N6
Dark walnut

*Maritime pine N8 comes with plywood edge banding

Plain colours



MG
Snow white

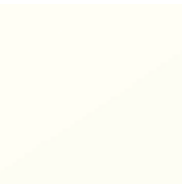


N5
Linen



R9
Black

Metal -Legs



S0
White



Z4
Aluminium grey



SC
Graphite grey



SG
Black

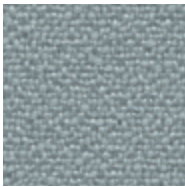


Shade card

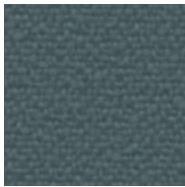
Erin

Fabric -Desktop screens

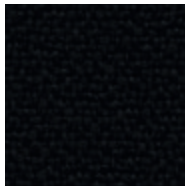
Bondaï - Cat. A - 100% polyester



KD
Cloud grey



KA
Storm grey

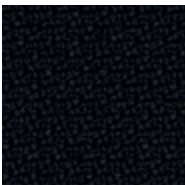


KE
Black

Step - Cat. B - 100% Trevira® CS



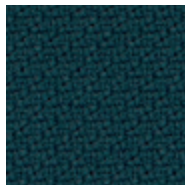
E5
Light grey



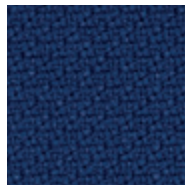
A6
Black



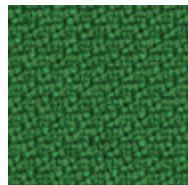
E4
Aqua



A4
Petroleum blue



A3
Navy blue



A1
Bamboo



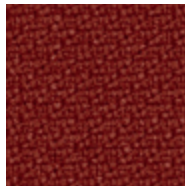
A9
English green



A2
Beige

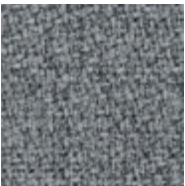


A5
Mustard yellow

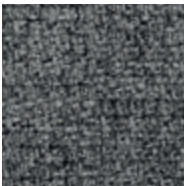


E6
Brick red

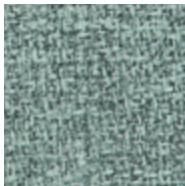
Step mélange - Cat. B - 100% Trevira® CS



B5
Mottled light grey



B1
Mottled graphite grey



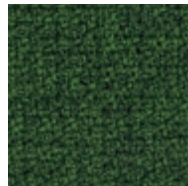
E7
Mottled aqua



B4
Mottled denim blue



B6
Mottled navy blue



B2
Mottled bamboo



E8
Mottled olive green



B3
Mottled beige



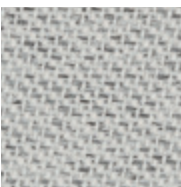
E9
Mottled mustard yellow



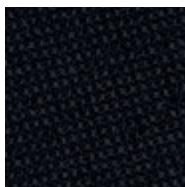
B7
Mottled dark brown

Fabric -Desktop screens

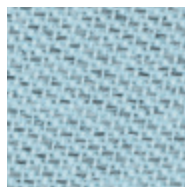
Chili - Cat. B - 100% flame-retardant post-consumer recycled polyester (FR inside fibres)



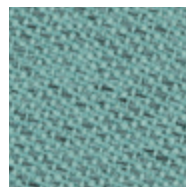
BC
Mottled light grey



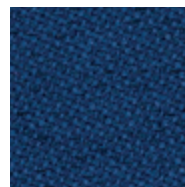
BD
Black



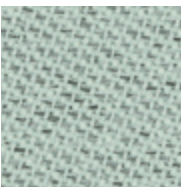
BF
Mottled frosty blue



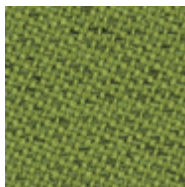
BG
Mottled celadon



BH
Mottled midnight blue



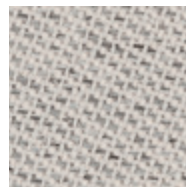
BJ
Mottled opaline



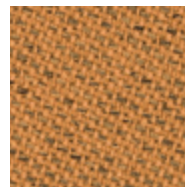
BK
Mottled olive green



BL
Mottled salmon



BM
Mottled beige



BO
Mottled turmeric



BN
Mottled cocoa

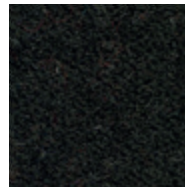
Fenice - Cat. D - 75% wool 25% PA



DA
Mottled light grey



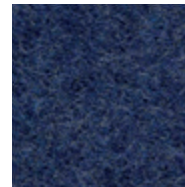
DB
Mottled graphite grey



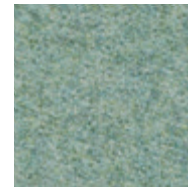
CQ
Black



CJ
Mottled light blue



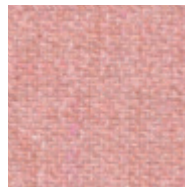
DC
Mottled dark blue



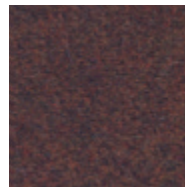
DF
Mottled celadon



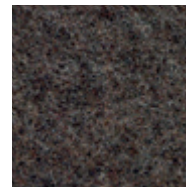
DG
Mottled dark green



DH
Powder pink



DZ
Dark sienna



DD
Mottled cocoa



DI
Mottled turmeric




DE
Mottled olive green



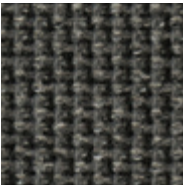
DJ
Mottled rust red

Fabric -Desktop screens

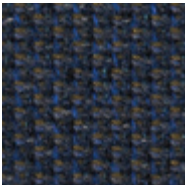
Cyber - Cat. D



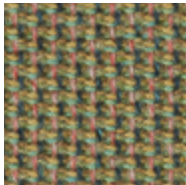
T8
Light grey




T9
Dark grey



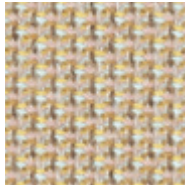
T5
Blue grey



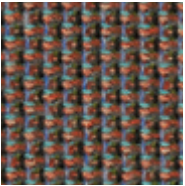
TZ
Almond green




TU
Fern green



TL
Golden beige



T6
Mottled salmon



T7
Rust red

Wood

	Melamine
	Thick 25 mm
	Worktops
Double-sided anti-reflective coating	✓
Finishes	All
Shock-resistant, with rounded edges ⁽¹⁾	✓
Antibacterial	✓
Density ⁽²⁾	600 > 670 kg/m³
PEFC (sourced from sustainably managed forests)	✓
E05 certified (compliant with standard NF EN 717)	✓
Fire rating (compliant with standard EN 13501-1)	Rating M3 (EUROCLASS D-S2, d0) for all finishes; rating M2 for White MG.
Average % from recycled materials (pre- and post-consumer)	68%. Shades R3 and N8 are Cradle to Cradle Certified (90%).
% recyclability	100%
Cleaning	Wipe with a damp cloth and soapy water. Do not use abrasive products or detergents.

(1) Edge banding in matching finish to worktops, except for N8 worktops (specific plywood edging) - ABS edge banding thk 2 mm
(2) Density: Tolerance +/- 10%

Fabric

Bondaï - Cat. A

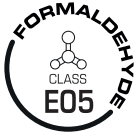
Composition	Weight	Abrasion resistance	Light fastness	Fastness to rubbing	Flammability	Environment
100% polyester	350 g/ml (lm) 250 g/m² ±5%	150 000 EN ISO 12947-2	6 EN ISO 105-B02	4-5 EN ISO 105 x 12 Wet/Dry	EN 1021 - 1&2 BS 7176 BS 5852 Crib5	STANDARD 100 by OEKO-TEX®



PEFC is the world's leading forest certification system and largest source of eco-certified forest products.

Chili - Cat. B

Composition	Weight	Abrasion resistance	Light fastness	Fastness to rubbing	Flammability	Environment
100% flame-retardant post-consumer recycled polyester (FR inside fibres)	470 g/ml (lm) (15.16 oz / lin yd)	60 000 EN ISO 12947-2	5-8 EN ISO 105-B02	4-5 EN ISO 105 x 12 Wet/Dry	EN 1021 - 1&2 NFP 92-503/504/505 M1 NF D 60-013 AM18 BS 7176 BS 5852 Crib 5 DIN 4102 B1 EN 13501	STANDARD 100 by OEKO-TEX® 100% recycled fabric Low emission of VOC



An E05 rating corresponds to a maximum of 0.062 mg/m³ or a limit of 0.05 ppm and comply with standard NF EN 717-2 and is the most stringent of the ratings authorised in France for furniture and construction materials



Antibacterial surface. Guaranteed on all melamine worktops

Step / Step Mélange - Cat. B

Composition	Weight	Abrasion resistance	Light fastness	Fastness to rubbing	Flammability	Environment
100% trevira® CS	470 g/m² (15.16 oz / lin yd)	100 000 EN ISO 12947-2	5-7 EN ISO 105-B02	4-5 EN ISO 105 x 12 Wet/Dry	EN 1021 - 1&2 NFP 92-503/504/505 M1 NF D 60-013 AM18 BS 7176 BS 5852 Crib 5 DIN 4102 B1 EN 13501	STANDARD 100 by OEKO-TEX® EU Ecolabel Non-metallic dyestuffs Low emission of VOC



All the components of the desk (top, structure & legs, motor, power supply unit & control unit) are guaranteed for 5 years

Fenice - Cat. D

Composition	Weight	Abrasion resistance	Light fastness	Fastness to rubbing	Flammability	Environment
75% wool 25% PA	335 g/m² ±7% 500 g/ml (lm) ±7%	100 000 ±20% EN ISO 5470-2	6 ±1% EN ISO 105-B02	4-5 EN ISO 105 x 12 Wet/Dry	EN 1021 - 1&2 BS 5852 Crib 5 CLASS 1 IM CALIFORNIA TB 117	Recyclable fabric



Motorised desks (specifically individual desks with worktops D80cm/D90cm, without castors and Bench Desks with 2 x D80 cm worktops) comply with the European standard EN 527 1/2 which sets the dimensions and requirements for safety, resistance and durability of office desks.

Cyber - Cat. D

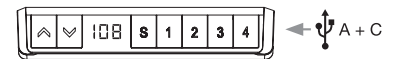
Composition	Weight	Abrasion resistance	Light fastness	Fastness to rubbing	Flammability	Environment
100% post-consumer recycled polyester	570 g/ml (lm) (18.39 oz / lin yd)	120 000 EN ISO 12947-2	7-8 EN ISO 105-B02	4-5 EN ISO 105 x 12 Wet/Dry	EN 1021 - 1&2 BS 5852 Crib 5 CALIFORNIA TB 117	STANDARD 100 by OEKO-TEX® 100% recycled fabric Low emission of VOC



87% of this range is made from recycled materials


ELECTRIC DRIVE

H. 65 to 130 cm


Individual desks

Rectangular section legs (60 x 90 mm)

DEPTH 70 CM

Worktops with pre-drilled holes for optional cable ports



W. 120 cm	1 533 127 + #1 #2	£ 648
W. 140 cm	1 533 128 + #1 #2	£ 657
W. 160 cm	1 533 129 + #1 #2	£ 666

Worktops with scalloped edge and pre-drilled holes for optional cable ports **NEW**


W. 120 cm	1 533 130 + #1 #2	£ 648
W. 140 cm	1 533 131 + #1 #2	£ 657
W. 160 cm	1 533 132 + #1 #2	£ 666

Worktops with pre-cut openings for one way Soft-closing top-access modules 

Metal cable trough included, in same finish as legs.



W. 120 cm	1 533 133 + #1 #2	£ 696
W. 140 cm	1 533 134 + #1 #2	£ 705
W. 160 cm	1 533 135 + #1 #2	£ 713

DEPTH 80 CM

Worktops with pre-drilled holes for optional cable ports



W. 120 cm	1 533 136 + #1 #2	£ 657
W. 140 cm	1 533 137 + #1 #2	£ 666
W. 160 cm	1 533 138 + #1 #2	£ 674
W. 180 cm	1 533 139 + #1 #2	£ 683
W. 200 cm ⁽¹⁾	1 533 140 + #1 #2	£ 700

Worktops with scalloped edge and pre-drilled holes for optional cable ports **NEW**


W. 120 cm	1 533 141 + #1 #2	£ 657
W. 140 cm	1 533 142 + #1 #2	£ 666
W. 160 cm	1 533 143 + #1 #2	£ 674
W. 180 cm	1 533 144 + #1 #2	£ 683

Worktops with pre-cut openings for one way Soft-closing top-access modules 






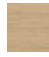

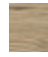
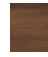




Metal cable trough included, in same finish as legs.



W. 120 cm	1 533 145 + #1 #2	£ 705
W. 140 cm	1 533 146 + #1 #2	£ 713
W. 160 cm	1 533 147 + #1 #2	£ 722
W. 180 cm	1 533 148 + #1 #2	£ 731
W. 200 cm ⁽¹⁾	1 533 149 + #1 #2	£ 748

⁽¹⁾ Desks W. 200 x D. 80 cm are mounted on a W. 180 cm structural frame (worktop overhangs by 10 cm at each side). For a full-width structure, contact us.

Shade card

MELAMINE										METAL			
#1 Worktops (thk 25 mm)										#2 Legs			
													
MG	N5	R9	N8	RZ	R1	R5	R3	N6		SO	Z4	SC	SG



Individual desks

DEPTH 90 CM

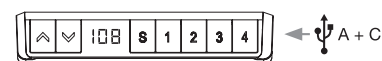
Worktops with pre-drilled holes for optional cable ports



W. 180 cm	1 533 164 + #1 #2	£ 705
W. 200 cm	1 533 165 + #1 #2	£ 740

ELECTRIC DRIVE

H. 65 to 130 cm



Ref.

Price excl. tax

Options for individual desks

SET OF 4 CASTORS FOR INDIVIDUAL DESKS

4 ABS castors with brakes, Ø 40 mm. Black shell. Grey roller bands. Suitable for all floor types. Mounted on the underside instead of the stabiliser feet. Minimum height with castors: 68 cm

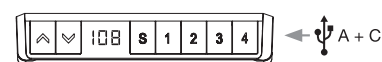


Set of 4 castors	1 816 103 OF	£ 30
------------------	--------------	------



ELECTRIC DRIVE

H. 65 to 130 cm



Ref.

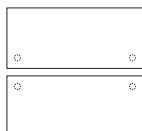
Price excl. tax

Shared-structure desks

Rectangular section legs (60 x 90 mm)

DEPTH 166,5 CM

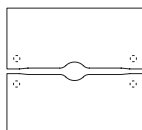
2 worktops D. 80 cm, each with pre-drilled holes for optional cable ports



W. 120 cm	1 533 150 + #1 #2	£ 1 356
W. 140 cm	1 533 151 + #1 #2	£ 1 374
W. 160 cm	1 533 152 + #1 #2	£ 1 391
W. 180 cm	1 533 153 + #1 #2	£ 1 409
W. 200 cm ⁽¹⁾	1 533 154 + #1 #2	£ 1 443

2 worktops D. 80 cm, each with a scalloped edge and pre-drilled holes for optional cable ports

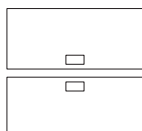
NEW



W. 120 cm	1 533 155 + #1 #2	£ 1 356
W. 140 cm	1 533 156 + #1 #2	£ 1 374
W. 160 cm	1 533 157 + #1 #2	£ 1 391
W. 180 cm	1 533 158 + #1 #2	£ 1 409

2 worktops D. 80 cm, each with a pre-cut opening for one way soft-closing top-access module 

Metal cable trough included for each worktop, in same finish as legs.



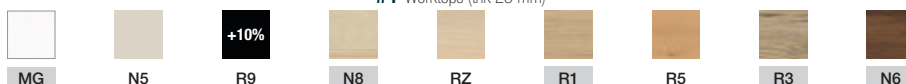
W. 120 cm	1 533 159 + #1 #2	£ 1 452
W. 140 cm	1 533 160 + #1 #2	£ 1 469
W. 160 cm	1 533 161 + #1 #2	£ 1 487
W. 180 cm	1 533 162 + #1 #2	£ 1 504
W. 200 cm ⁽¹⁾	1 533 163 + #1 #2	£ 1 539

(1) Desks W. 200 cm are mounted on a W. 180 cm structural frame (worktop overhangs by 10 cm at each side).

Shade card

MELAMINE

#1 Worktops (thk 25 mm)



METAL

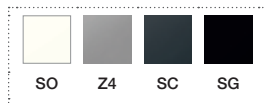
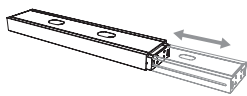
#2 Legs



Options for shared-structure desks

DOUBLE CABLE TROUGH

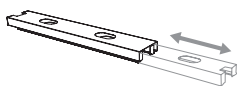
Telescopic cable trough to be fixed between the 2 legs of the structure for storing plug and cable boxes. Perforations on top and bottom for easy cable routing.



White metal	1 533 168 SO	£ 126
Grey, graphite grey or black metal	1 533 003 Z4, SC or SG	£ 126

HIGH-CAPACITY CABLE CHANNEL

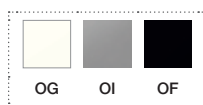
Total cable trough height including channel: 11.5 cm. To be placed on the cable trough instead of the sliding cover.



1 532 230 + #	£ 79
---------------	------

FLEXIBLE CABLE CHANNEL (SOLD INDIVIDUALLY)

Made from ABS. Secured between the cable trough and the worktop.



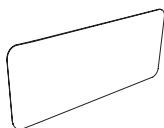
Per unit	1 532 232 + #	£ 56
----------	---------------	------

Fabric desktop screens H. 70 cm for shared-structure desks

ACOUSTIC FABRIC

Tackable panel (47 mm thick) - Fixing clamps to be ordered separately.

Desktop screens



W. 120 cm	1 532 007 + #3	£ 403	£ 423	£ 551
W. 140 cm	1 532 008 + #3	£ 423	£ 443	£ 571
W. 160 cm	1 532 009 + #3	£ 443	£ 463	£ 591
W. 180 cm	1 532 010 + #3	£ 462	£ 482	£ 610

Fixing clamps

Epoxy-coated metal clamps for fabric-covered acoustic desktop screens H. 70 cm. - Set of clamps



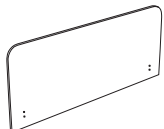
Ref.	Price excl. tax
------	-----------------

1 533 087 + #	£ 58
---------------	------

NON-ACOUSTIC FABRIC

Panel thickness 25 mm - Rounded corners on the upper edge - Fixing clamps to be ordered separately.

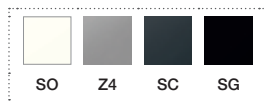
Desktop screens



W. 120 cm	1 533 006 + #3	£ 296	£ 316	£ 444
W. 140 cm	1 533 007 + #3	£ 315	£ 335	£ 463
W. 160 cm	1 533 008 + #3	£ 335	£ 355	£ 483
W. 180 cm	1 533 009 + #3	£ 354	£ 374	£ 502

Fixing clamps

Epoxy-coated metal clamps for fabric-covered non-acoustic desktop screens H. 70 cm. - Set of clamps



Ref.	Price excl. tax
------	-----------------

1 533 004 + #	£ 48
---------------	------

Shade card

FABRIC		
#3 Desktop screens		
Cat. A	Cat. B	Cat. D
		
Bondai	Step / Step mélange Chili	Fenice Cyber

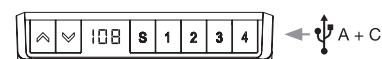


Individual desks

Rectangular section legs (60 x 90 mm)

ELECTRIC DRIVE

H. 65 to 130 cm



Ref.

Price excl. tax

DEPTH 70 CM

Worktops with pre-drilled holes for optional cable ports



W. 120 cm	1 533 127 + #1 #2	€ 745
W. 140 cm	1 533 128 + #1 #2	€ 755
W. 160 cm	1 533 129 + #1 #2	€ 765

Worktops with scalloped edge and pre-drilled holes for optional cable ports **NEW**



W. 120 cm	1 533 130 + #1 #2	€ 745
W. 140 cm	1 533 131 + #1 #2	€ 755
W. 160 cm	1 533 132 + #1 #2	€ 765

Worktops with pre-cut openings for one way Soft-closing top-access modules 

Metal cable trough included, in same finish as legs.



W. 120 cm	1 533 133 + #1 #2	€ 800
W. 140 cm	1 533 134 + #1 #2	€ 810
W. 160 cm	1 533 135 + #1 #2	€ 820

DEPTH 80 CM

Worktops with pre-drilled holes for optional cable ports



W. 120 cm	1 533 136 + #1 #2	€ 755
W. 140 cm	1 533 137 + #1 #2	€ 765
W. 160 cm	1 533 138 + #1 #2	€ 775
W. 180 cm	1 533 139 + #1 #2	€ 785
W. 200 cm ⁽¹⁾	1 533 140 + #1 #2	€ 805

Worktops with scalloped edge and pre-drilled holes for optional cable ports **NEW**



W. 120 cm	1 533 141 + #1 #2	€ 755
W. 140 cm	1 533 142 + #1 #2	€ 765
W. 160 cm	1 533 143 + #1 #2	€ 775
W. 180 cm	1 533 144 + #1 #2	€ 785

Worktops with pre-cut openings for one way Soft-closing top-access modules 

Metal cable trough included, in same finish as legs.



W. 120 cm	1 533 145 + #1 #2	€ 810
W. 140 cm	1 533 146 + #1 #2	€ 820
W. 160 cm	1 533 147 + #1 #2	€ 830
W. 180 cm	1 533 148 + #1 #2	€ 840
W. 200 cm ⁽¹⁾	1 533 149 + #1 #2	€ 860

⁽¹⁾ Desks W. 200 x D. 80 cm are mounted on a W. 180 cm structural frame (worktop overhangs by 10 cm at each side). For a full-width structure, contact us.

Shade card

MELAMINE

#1 Worktops (thk 25 mm)



METAL

#2 Legs





Individual desks

DEPTH 90 CM

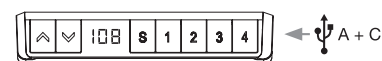
Worktops with pre-drilled holes for optional cable ports



W. 180 cm	1 533 164 + #1 #2	€ 810
W. 200 cm	1 533 165 + #1 #2	€ 850

ELECTRIC DRIVE

H. 65 to 130 cm



Ref.

Price excl. tax

Options for individual desks

SET OF 4 CASTORS FOR INDIVIDUAL DESKS

4 ABS castors with brakes, Ø 40 mm. Black shell. Grey roller bands. Suitable for all floor types. Mounted on the underside instead of the stabiliser feet. Minimum height with castors: 68 cm

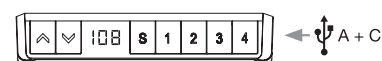


Set of 4 castors	1 816 103 OF	€ 34
------------------	--------------	------



ELECTRIC DRIVE

H. 65 to 130 cm

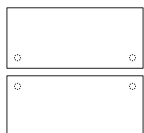


Shared-structure desks

Rectangular section legs (60 x 90 mm)

DEPTH 166,5 CM

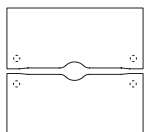
2 worktops D. 80 cm, each with pre-drilled holes for optional cable ports



W. 120 cm	1 533 150 + #1 #2	€ 1 559
W. 140 cm	1 533 151 + #1 #2	€ 1 579
W. 160 cm	1 533 152 + #1 #2	€ 1 599
W. 180 cm	1 533 153 + #1 #2	€ 1 619
W. 200 cm ⁽¹⁾	1 533 154 + #1 #2	€ 1 659

2 worktops D. 80 cm, each with a scalloped edge and pre-drilled holes for optional cable ports

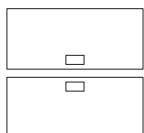
NEW



W. 120 cm	1 533 155 + #1 #2	€ 1 559
W. 140 cm	1 533 156 + #1 #2	€ 1 579
W. 160 cm	1 533 157 + #1 #2	€ 1 599
W. 180 cm	1 533 158 + #1 #2	€ 1 619

2 worktops D. 80 cm, each with a pre-cut opening for one way soft-closing top-access module 

Metal cable trough included for each worktop, in same finish as legs.



W. 120 cm	1 533 159 + #1 #2	€ 1 669
W. 140 cm	1 533 160 + #1 #2	€ 1 689
W. 160 cm	1 533 161 + #1 #2	€ 1 709
W. 180 cm	1 533 162 + #1 #2	€ 1 729
W. 200 cm ⁽¹⁾	1 533 163 + #1 #2	€ 1 769

⁽¹⁾ Desks W. 200 cm are mounted on a W. 180 cm structural frame (worktop overhangs by 10 cm at each side).

Shade card

MELAMINE

#1 Worktops (thk 25 mm)



METAL

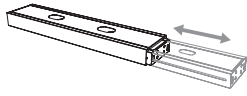
#2 Legs



Options for shared-structure desks

DOUBLE CABLE TROUGH

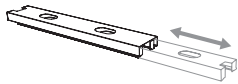
Telescopic cable trough to be fixed between the 2 legs of the structure for storing plug and cable boxes. Perforations on top and bottom for easy cable routing.



White metal	1 533 168 SO	€ 145
Grey, graphite grey or black metal	1 533 003 Z4, SC or SG	€ 145

HIGH-CAPACITY CABLE CHANNEL

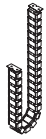
Total cable trough height including channel: 11.5 cm. To be placed on the cable trough instead of the sliding cover.



1 532 230 + #	€ 90
---------------	------

FLEXIBLE CABLE CHANNEL (SOLD INDIVIDUALLY)

Made from ABS. Secured between the cable trough and the worktop.



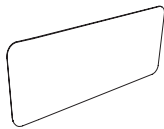
Per unit	1 532 232 + #	€ 64
----------	---------------	------

Fabric desktop screens H. 70 cm for shared-structure desks

ACOUSTIC FABRIC

Tackable panel (47 mm thick) - Fixing clamps to be ordered separately.

Desktop screens



W. 120 cm	1 532 007 + #3	€ 459	€ 481	€ 627
W. 140 cm	1 532 008 + #3	€ 482	€ 504	€ 650
W. 160 cm	1 532 009 + #3	€ 504	€ 526	€ 672
W. 180 cm	1 532 010 + #3	€ 526	€ 548	€ 694

Fixing clamps

Epoxy-coated metal clamps for fabric-covered acoustic desktop screens H. 70 cm. - Set of clamps

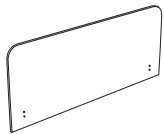


Ref.	Price excl. tax	Cat. A fabric	Cat. B fabric	Cat. D fabric
1 533 087 + #	€ 67			

NON-ACOUSTIC FABRIC

Panel thickness 25 mm - Rounded corners on the upper edge - Fixing clamps to be ordered separately.

Desktop screens



W. 120 cm	1 533 006 + #3	€ 342	€ 364	€ 510
W. 140 cm	1 533 007 + #3	€ 364	€ 386	€ 532
W. 160 cm	1 533 008 + #3	€ 386	€ 408	€ 554
W. 180 cm	1 533 009 + #3	€ 409	€ 431	€ 577

Fixing clamps

Epoxy-coated metal clamps for fabric-covered non-acoustic desktop screens H. 70 cm. - Set of clamps



Ref.	Price excl. tax	Cat. A fabric	Cat. B fabric	Cat. D fabric
1 533 004 + #	€ 55			

Shade card

FABRIC		
#3 Desktop screens		
Cat. A	Cat. B	Cat. D
		
Bondai	Step / Step mélange Chili	Fenice Cyber



EUROPEAN
OFFICE
FURNITURE
MANUFACTURER



PARIS

1 rue des Céréales - Bât 112 - 93200 **SAINT DENIS** - Tel : +33 (0)1 49 35 60 00

BRUXELLES

81, Chaussée de Nivelles - 1420 **Braine-l'Alleud** - Tel : +32 (0)2 894 99 80

eol-group.net