

# Paul

A TRENDY AND AFFORDABLE RANGE



EUROPEAN  
OFFICE  
FURNITURE  
MANUFACTURER





#### A TRENDY AND AFFORDABLE RANGE

The PAUL range is designed as an entry-level solution that combines simplicity and comfort. Available with either a fabric or a mesh back, with a matching headrest, PAUL meets all essential workstation requirements. Thanks to its multiple options – 1D armrests and three mechanism choices – PAUL adapts to individual needs and provides personalised day-to-day comfort. Versatile and functional, the PAUL range is the ideal solution for efficiently equipping work environments while ensuring excellent value for money.

PAUL seats  
LUTZ 2 desks  
Bureau ARIAL desk  
Economy melamine pedestals



**A complete range**

- › Fixed backrest in either fabric or mesh
- › Height-adjustable lumbar support

**Customisable**

- › 1D armrests
- › Fabric or mesh headrest

**Mechanism options**

- › **Comfort synchro mechanism:** coordinated reclining of the seat and the backrest. The backrest tension can be adjusted using a front knob.
- › **Synchro mechanism with seat slide:** coordinated reclining of the seat and the backrest. The backrest tension can be adjusted using a side lever and the seat position can be adjusted with a 6-cm seat slide.
- › **Self-adjusting synchro mechanism:** coordinated reclining of the seat and the backrest. The backrest automatically adjusts its tension according to the user's weight.





◀ **Back comfort**  
Height-adjustable lumbar support +7 cm



◀ **Armrests**  
1D

▶ **Back comfort**  
Height-adjustable lumbar support +6 cm



▶ **Headrest**  
Available in fabric or mesh.  
Height-adjustable (+6 cm). Mesh version also adjustable in tilt.



◀ **Backrest**  
With soft, rounded lines



◀ **Castors**  
For soft floors

# Paul

## TECHNICAL CHARACTERISTICS



EUROPEAN  
OFFICE  
FURNITURE  
MANUFACTURER



**Back comfort**

Fabric or mesh backrest with integrated adjustable lumbar support

**Headrest**

Available in fabric or mesh



**Mechanism options**

- Synchro comfort
- Synchro with seat-depth adjustment
- Synchro self-regulating

**Armrests**

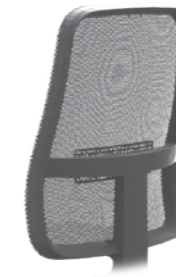
1D

**Backrest**



**Fabric backrest**

- › Inner structure and back cover in plastic
- › Black plastic rear shell
- › Foam with a thickness of 3 cm, density 40 kg/m<sup>3</sup>
- › Integrated lumbar support: height-adjustable +6 cm
- › Optional: fabric headrest, height-adjustable with 6 cm travel



**Mesh backrest**

- › Black plastic backrest frame with FIDIVI mesh
- › Rack-adjusted lumbar support: height-adjustable +7 cm
- › Optional: mesh headrest adjustable in tilt and height: 6 cm travel

**Seat**



- › Beech wood structure
- › Foam with a thickness of 5 cm, density 35 kg/m<sup>3</sup>
- › Wide seat: 53 cm

**Mechanisms and adjustments**



**Comfort synchro mechanism**

- › Seat tilt: 0–10° and backrest tilt: 0–20°
- › Backrest lockable in 5 positions with anti-rebound system
- › Backrest tension adjustment with front knob



**Synchro mechanism with seat-depth adjustment**

- › Seat tilt: 0–10° and backrest tilt: 0–20°
- › Backrest lockable in 5 positions with anti-rebound system
- › Backrest tension adjustment with front knob
- › Seat depth adjustment: 6 cm travel



**Self-regulating synchro mechanism**

- › Seat tilt: 0–5° and backrest tilt: 0–17°
- › Backrest lockable in 4 positions with anti-rebound system
- › Automatic backrest tension adjustment according to user weight

**Base**



**5-star base**

- › 70% polyamide and 30% fibreglass, Ø 690 mm
- › Black gas lift, 13 cm travel

**Castors**

- › Castors Ø 50 mm, suitable for soft floors

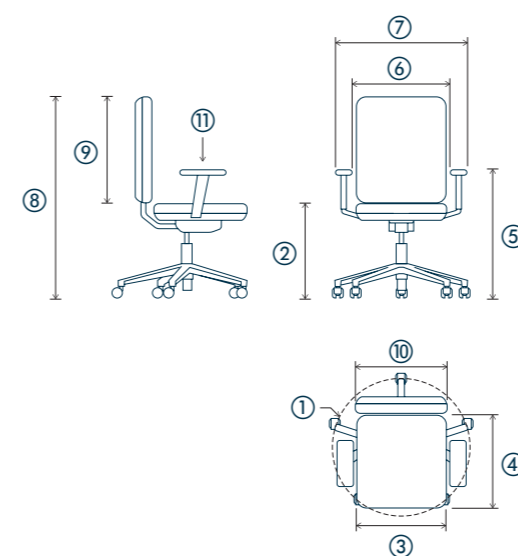
**Armrests**



**1D Armrests**

- › 100% polypropylene

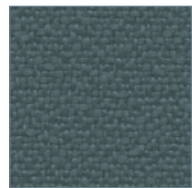
**Fabric and mesh backrests**



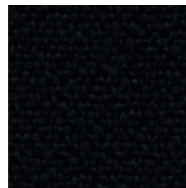
① Base diameter	69 cm
② Seat height	from 42 to 55 cm (extension : 13 cm)
③ Seat width	53 cm
④ Seat depth	49 cm
⑤ Armrest height	from 63 cm to 76 cm
⑥ Internal armrest spacing	49 cm
⑦ External armrest spacing	66 cm
⑧ Overall chair height	from 105 to 118 cm
⑨ Backrest height	60 cm
⑩ Backrest width	47 cm
⑪ 1D armrest pad size	8 x 24 cm
Maximum supported weight	120 kg

**Fabric and mesh backrests**

**Bondaï - Cat. A**

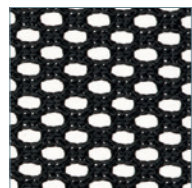


**KA**  
Storm grey



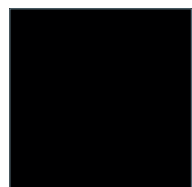
**KE**  
Black

**Mesh backrest**



**TI**  
Black

**Nylon base**



**SV**  
Black



Range manufactured in Europe



EN1335-1-2 certified: mesh version with synchronous mechanism and 1D armrests



EN1728 certified



3-year warranty for normal use (8 h/day)



25% of this range made from recycled materials  
90% of this range is recyclable

**Technical characteristics**

**Fabrics**

	Composition	Weight	Abrasion resistance	Light fastness	Fastness to rubbing	Flammability	Environment
<b>Bondaï</b> Cat. A	100% polyester	350 g/ml (lm) 250 g/m <sup>2</sup> ±5%	150 000 EN ISO 12947-2	6 EN ISO 105-B02	4-5 EN ISO 105 x 12 Wet/Dry	EN 1021 - 1&2 BS 7176 BS 5852 Crib5	STANDARD 100 by OEKO-TEX®



EUROPEAN  
OFFICE  
FURNITURE  
MANUFACTURER



**PARIS**

1 rue des Céréales - Bât 112 - 93200 SAINT DENIS - Tel : +33 (0)1 49 35 60 00

**BRUXELLES**

81, Chaussée de Nivelles - 1420 BRAINE-L'ALLEUD - Tel : +32 (0)2 894 99 80

[eol-group.net](http://eol-group.net)