

# Power & cable management

## TECHNICAL DATA SHEET



EUROPEAN  
OFFICE  
FURNITURE  
MANUFACTURER





## CABLE PORTS

### Characteristics

Cable ports are both practical and stylish, allowing easy cable routing and keeping the workspace tidy. Two main types exist: standard ("plain") ports, and socket ports. Both are designed to be installed in pre-drilled holes (Ø 80 mm) in worktops.

### Plain cable ports



#### «EOL» cable port

- › Round cable port made from injection-moulded ABS, consisting of two parts: an outer ring that fits into the worktop (Ø 80 mm), and a snap-in "EOL" cap (Ø 60 mm)
- › Assembly: For worktops with pre-drilled holes for cable ports Ø 80 mm
- › Finishes: White (OG), Aluminium grey (OI), Graphite grey (OK) or Black (OF)

Fabriqu   
en France



#### Round cable port with Black brush

- › Round cable ports made from reinforced ABS (technopolymer)
- › Assembly: For worktops with pre-drilled holes for cable ports Ø 80 mm
- › Finishes: White (SO), Chrome (SQ) or Black (SG)



### Socket ports



#### Socket port for worktop connectivity

- › Port made from injection-moulded ABS, Ø 80 mm - protrudes 35 mm below the worktop
- › 1 PC socket + 3 holes for cables
- › Supplied with a 2-metre power cable with an EU plug (UK version available)
- › Assembly: For worktops with pre-drilled holes for cable ports Ø 80 mm
- › Finishes: White (OG) or Black (OF)



#### Socket port for worktop connectivity

- › Port (Ø 80 mm) made from injection-moulded ABS, with an outer ring (Ø 105 mm) to be screwed to the underside of the worktop
- › 2 models:
  - 1 PC socket + 1 RJ45 + 1 USB-A + 1 USB-C
  - 1 PC socket + 1 USB-A + 1 USB-C + 1 hole for cables
- › Supplied with a 2-metre power cable with an EU plug (UK version available)
- › Assembly: For worktops with pre-drilled holes for cable ports Ø 80 mm
- › Finishes: White (OG) or Black (OF)

Fabriqu   
en France



#### Socket port for worktop connectivity, with sliding cover

- › ABS port with a sliding cover, for direct connectivity via the worktop
- › Dimensions: W. 124 x D. 90 mm (W. 190 when open) - protrudes 95 mm below the worktop
- › 2 models:
  - 1 PC socket + 1 RJ45 (Cat6) + 1 USB-A
  - 1 PC socket + 1 USB-A + 1 USB-C
- › Supplied with a 1.5-metre power cable with an EU plug (UK and CH versions available), an RJ45 cable (2 metres) and a HDMI cable
- › Assembly: For worktops with pre-drilled holes for cable ports Ø 80 mm
- › Finishes: White (OG) or Black (OF)



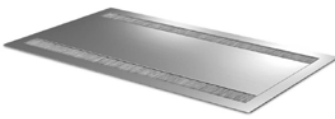


## TOP-ACCESS MODULES

### Characteristics

Top-access modules are both practical and stylish, allowing easy cable management and keeping the workspace tidy. Various versions are available: one-way or dual-hinged opening, with or without a socket strip. They are designed to be installed in pre-cut openings in the worktops of desks and tables (individual and shared-structure models). Power cables for top-access modules with socket strips must be ordered separately. **We recommend that no more than 2 socket strips are connected in series to a single power source.**

### Top-access modules



#### Plain soft-closing top-access modules (no socket strip)

- › Metal top-access module - for worktops of thickness 25 to 30 mm
- › Soft-closing mechanism
- › Fitted with grey brushes (except for Black SG modules, which have black brushes)
- › Assembly: For worktops with one or more pre-cut openings for top-access modules
- › 2 models :
  - One-way top-access module: W. 240 x D. 120 mm (for the short or long edge of a worktop)
  - Dual-hinged top-access module: W. 316 x D. 148 mm (for the centre of a worktop)
- › Finishes: Aluminium grey (OI), White (SO) or Black (SG)



#### Soft-closing top-access modules with a socket strip

- › Metal top-access module + socket strip made from injection-moulded ABS - compatible with worktops of thickness 25 to 30 mm
- › Fitted with grey brushes (except for Black SG modules, which have black brushes)
- › Assembly: For worktops with one or more pre-cut openings for top-access modules
- › 2 models :
  - One-way top-access module: W. 240 x D. 120 mm (for the short or long edge of a worktop)
  - Dual-hinged top-access module: W. 316 x D. 148 mm (for the centre of a worktop)
  - Protrudes 75 mm below the worktop
- › One-way top-access modules:
  - 3 EU PC sockets (UK version available)
  - 2 EU PC sockets (UK version available) + 2 RJ45 (Cat6) + 1 USB-A + 1 USB-C
- › Finishes: Aluminium grey (OI), White (SO) or Black (SG)
- › Dual-hinged top-access modules:
  - 3 EU PC sockets (UK and CH versions available) + 2 RJ45 (Cat6) + 1 USB-A + 1 USB-C
- › Finishes: Aluminium grey (OI), White (SO) or Black (SG)

#### General information:

- › PC sockets:
  - Rated voltage: 220-250 V AC, 50 Hz
  - Rated current: 16A
  - Maximum load: 3400W
- › USB port (A or C):
  - Input: 100-250 V AC, 50/60 Hz
  - Output: USB-A + A, max. load 10.5W (5V/2.1A)
  - Output: USB-A + C, max. load 18W if charging via only one port. (5V/3A, 9V/2A, 12V/1.5A). Max. load 15W if charging via both ports simultaneously (5V/3A).
  - Compatibility: any device with USB charging capability
  - USB version: 2.0
- › RJ45 port:
  - Category 6 (Cat6)



# **SOCKET OUTLETS**

## **Characteristics**

Socket outlets provide easy power management in workspaces. They can be placed directly on a worktop or installed in a cable trough, and are compatible with individual desks and meeting tables alike. Power cables must be ordered separately. **We recommend that no more than 2 socket strips are connected in series to a single power source.**

## **Worktop-mounted socket outlets**



### **Worktop-mounted socket outlet**

- › Metal and injection-moulded ABS
- › Dimensions: W. 210 x D. 90 x H. 60 mm
- › Module: 2 EU PC sockets (UK and CH versions available) + 1 USB-A + 1 USB-C
- › Power cable to be ordered separately
- › Assembly: Secured to the worktop using brackets (spacing 0-38 mm)
- › Finishes: Aluminium and Black (OF)



## **Socket outlet kits for cable troughs**



### **Socket outlets**

- › Injection-moulded ABS, or metal and injection-moulded ABS (depending on model)
- › Assembly: To be placed in a cable trough

#### › 4 models:

- 4 PC sockets - Dimensions: W. 272 x D. 52 x H. 48 mm  
UK version available - Dimensions: W. 310 x D. 52 x H. 48 mm
- 3 PC sockets + 1 USB-A + 1 USB-C - Dimensions: W. 277 x D. 52 x H. 48 mm  
UK version available - Dimensions: W. 304 x D. 52 x H. 48 mm
- 3 PC sockets + 2 RJ45 (Cat6) + 1 USB-A + 1 USB-C - Dimensions: W. 285 x D. 63 x H. 51 mm  
UK version available - Dimensions: W. 285 x D. 63 x H. 51 mm  
CH version available - Dimensions: W. 338 x D. 63 x H. 51 mm
- 3 PC sockets + 1 RJ45 (Cat6) + 1 HDMI - Dimensions: W. 232 x D. 63 x H. 51 mm  
UK version available - Dimensions: W. 232 x D. 63 x H. 51 mm  
CH version available - Dimensions: W. 285 x D. 63 x H. 51 mm

- › Power cable to be ordered separately

#### General information:

- › PC sockets:
  - Rated voltage: 220-250 V AC, 50 Hz
  - Rated current: 16A (10A for CH sockets)
  - Maximum load: 3400W (2200W for CH sockets)
- › USB port (A or C):
  - Input: 100-250 V AC, 50/60 Hz
  - Output: USB-A + A, max. load 10.5W (5V/2.1A)
  - Output: USB-A + C, max. load 18W if charging via only one port. (5V/3A, 9V/2A, 12V/1.5A). Max. load 15W if charging via both ports simultaneously (5V/3A).
  - Compatibility: any device with USB charging capability
  - USB version: 2.0

- › RJ45 port: Category 6 (Cat6)





## CABLES & CONNECTORS

### Characteristics

Cables and connectors are essential components for socket outlets, cable ports and top-access modules. Socket ports come with cables, but for socket outlets and top-access modules with a socket strip, cables must be ordered separately. **We recommend that no more than 2 socket strips are connected in series to a single power source.**

### Cables



#### Power cable

- › Plastic/tin
- › Cable length 3 metres
- › Connectors: female GST 18i3 connector and CEE 7/7 mains plug (UK and CH versions available)
- › Nominal cross-sectional area of conductor: 1.5 mm<sup>2</sup>
- › Protecting rating (IP): IP20
- › Type: H05VV-F



#### Linking cable

- › Plastic/tin
- › Cable length 2 metres
- › Connectors: female GST 18i3 connector + male GST 18i3 connector
- › Nominal cross-sectional area of conductor: 1.5 mm<sup>2</sup>
- › Protecting rating (IP): IP40
- › Type: H05Z1Z1-F
- › General information:
  - Rated voltage: 250 V
  - Rated pulse voltage: 4 kV
  - Rated current: 16A (10A for CH sockets)
  - Continuity resistance: 23.8 mOhm
  - Max. cable diameter: 8.3 mm
  - Cable colour: black



### Connectors



- › Made from polyamide
- › Assembly: for attachment to Wieland GT18 connectors on socket outlets and the socket strips of top-access modules
- › 2 models:
  - 1 input + 1 output (for connecting linking cables together or to a power cable)
  - 1 input + 2 outputs (to create an additional output for use in series configurations)
- › Protecting rating (IP): IP40
- › General information:
  - Rated voltage: 250 V
  - Rated current: 20A
  - Rated pulse voltage: 4 kV
  - Connector colour: black







## CABLE MANAGEMENT

### Characteristics

Cable management solutions like horizontal cable troughs, vertical channels and sheaths and cable guides ensure safe, tidy routing of electrical wiring in office spaces. Practical, stylish and user-friendly, they are an essential accessory for modern workplaces.

### Horizontal cable management

#### Cable troughs for individual desks



- › Folded sheet steel, thickness 1 mm
- › Assembly:
  - Secured to the underside of the worktop (using inserts or wood screws)
  - Compatibility: for worktops of width 1200 to 1800 mm, select a cable trough 30 cm shorter than the width of the worktop.
  - For ROBIN and 4LINE desks, select a cable trough 50 cm shorter than the width of the worktop.
  - For desks with a structural pedestal, select a cable trough 70 cm shorter than the width of the worktop.
- › Worktops with one or more pre-cut openings for top-access modules are supplied with a cable trough.
- › Usable dimensions: H. 100 x D. 129 mm
- › Finishes coordinated with the desk legs: White (SO), Aluminium grey (SA), Graphite grey (SC) or Black (SG)

Fabriqu   
en France



#### Cable troughs for shared-structure desks



- › Folded sheet steel, thickness 1 mm
- › Assembly:
  - Secured to the underside of the worktop (using wood screws that screw into 4 brackets built into the body of the cable trough)
  - Compatibility: For shared-structure desks with a fixed single worktop or fixed split worktops of width 1200 to 1800 mm, select a cable trough 30 cm shorter than the width of the worktop.
  - For ROBIN and 4LINE desks, select a cable trough 50 cm shorter than the width of the worktop.
- › Cable troughs are perforated at the ends to allow attachment of a vertical cable channel.
- › Worktops with one or more pre-cut openings for top-access modules are supplied with a cable trough.
- › Usable dimensions: H. 140 x D. 240 mm
- › Finishes coordinated with the desk legs: White (SO), Aluminium grey (SA), Graphite grey (SC) or Black (SG)

Fabriqu   
en France



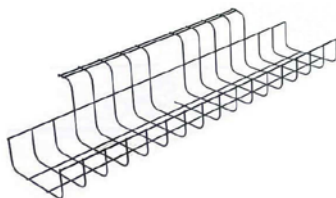
#### Cable guides



- › Black injection-moulded ABS
- › 5 compartments for cable routing
- › Secured using wood screws (supplied)
- › W. 170 mm
- › Sold in sets of 2



#### Wireframe cable troughs



- › Welded wireframe structure, thickness 1.5 mm
- › Secured using 2 wood screws (supplied)
- › Models:
  - W. 490 x D. 100 x H. 50 mm
  - W. 790 x D. 100 x H. 50 mm
- › Finish: Aluminium grey SB





## CABLE MANAGEMENT

### Characteristics

Cable management solutions like horizontal cable troughs, vertical channels and sheaths and cable guides ensure safe, tidy routing of electrical wiring in office spaces. Practical, stylish and user-friendly, they are an essential accessory for modern workplaces.

### Vertical cable management



#### Magnetic clip-on cable housing

- › Sheet steel, thickness 0.7 mm
- › For routing cables down rectangular section legs on CONECT, RIO and ARIAL desks/tables
- › Assembly: Magnetic attachment to the leg + clip-on cover
- › Dimensions:
  - H. 550 x W. 85 x D. 61 mm for CONECT and RIO
  - H. 605 x W. 115 x D. 51 mm for ARIAL
- › Finishes coordinated with the desk legs: White (SO), Aluminium grey (SA), Graphite grey (SC) or Black (SG)

Fabriqu   
en France



#### Magnetic cable housing

- › Sheet steel, thickness 1.5 mm, epoxy powder finish
- › For routing cables down rectangular section legs on desks
- › Assembly: Magnetic attachment to the leg
- › Dimensions: H. 470 x W. 50 x D. 25 mm
- › Finishes coordinated with the desk legs: White (SO), Aluminium grey (SA), Graphite grey (SC) or Black (SG)

Fabriqu   
en France



#### Extendable vertical cable channel – DESIGN

- › Spiral channel made from injection-moulded ABS
- › Channel diameter for cable routing: 92 mm
- › Secured using wood screws (supplied)
- › Max. height 1300 mm
- › Weighted base Ø 150 mm
- › Finishes: Aluminium grey (OI), White (OG) or Black (OF)



#### Extendable vertical cable channel – ECO

- › Articulated channel made from injection-moulded ABS
- › 4 compartments for cable routing. The total length can be adjusted by removing segments. The flexible, articulated design makes the channel ideal for sit-stand desks.
- › Secured using wood screws (supplied)
- › Max. height 1300 mm
- › Weighted metal base
- › Finishes: White (OG) or Black (OF)



#### Flexible zipped cable sheath

- › Made from polyester mesh
- › Internal width 30 mm; full-length zip for easy access
- › 2 sheaths can be zipped together to double the capacity
- › Two heights available: 750 or 1500 mm
- › Finishes: Grey (IM) or Black (IZ)



## Characteristics

Modesty panels are optional accessories that increase user comfort by providing under-desk privacy. They attach to the underside of a worktop using inserts or wood screws. Metal, melamine and fabric-covered versions are available.

## General features

Modesty panels can be fitted on desks with a crossbeam structure. They are secured to the worktop using inserts or wood screws.

Length: select a modesty panel 300 mm shorter than the width of the worktop.

- Worktop W. 1200 mm: modesty panel W. 900 mm
- Worktop W. 1400 mm: modesty panel W. 1100 mm
- Worktop W. 1600 mm: modesty panel W. 1300 mm
- Worktop W. 1800/2000 mm: modesty panel W. 1500 mm

For desks with a structural pedestal, select a modesty panel 700 mm shorter than the width of the worktop.

For asymmetric and symmetric compact worktops, a cable trough can be fitted (on either the visitor side or the user side) as well as the modesty panel.

### Metal modesty panels



- › Sheet steel (thickness 0.7 mm) with 3 horizontal grooves
- › Assembly: Secured to the underside of melamine worktops using inserts and 3 or 4 M6x12 screws
- › Total height below worktop: H. 280 mm
- › Finishes coordinated with the desk legs: White (SO), Aluminium grey (SA), Graphite grey (SC) or Black (SG)

### Melamine modesty panels



- › Melamine, thickness 19 mm
- › Assembly: Secured using cam and dowel fasteners
- › Total height below worktop: H. 280 mm
- › Finishes: White (MG) or Natural oak (R1). For other colours, contact us.

### Fabric-covered modesty panels



- › Galvanised sheet steel (thickness 2 mm) with a fabric covering
- › Assembly: Secured to the underside of melamine worktops using inserts and 3 or 4 M6x12 screws
- › Total height below worktop: H. 280 mm
- › Finishes: Bondai (Cat. A), Step / Step Melange / Chili (Cat. B), Secret (Cat. C), Fenice / Cyber (Cat. D)





EUROPEAN  
OFFICE  
FURNITURE  
MANUFACTURER



**PARIS**

1 rue des Céréales - Bât 112 - 93200 **SAINT DENIS** - Tél : +33 (0)1 49 35 60 00

**BRUXELLES**

81, Chaussée de Nivelles - 1420 **Braine-l'Alleud** - Tel : +32 (0)2 894 99 80

[eol-group.net](http://eol-group.net)